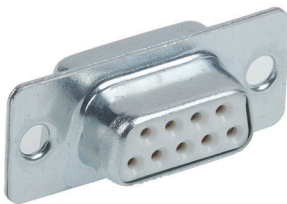


High Performance D-Sub Connectors



Features

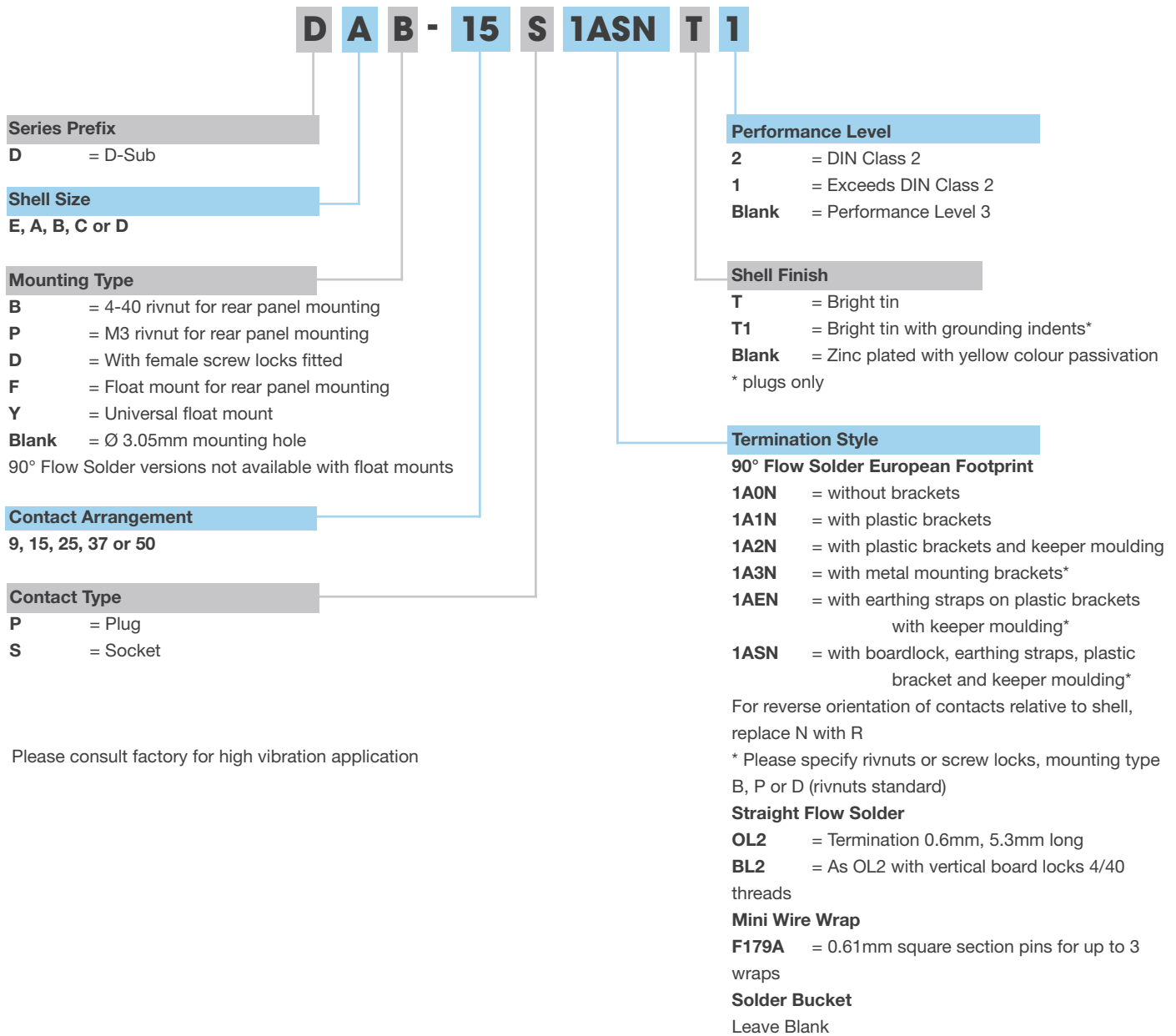
- Conforms to BS9523 F0010 and F0018
- Meets dimensional requirements of MIL-C-24308, BS9523 F0018 and DIN 41652
- Standards RS232 interface
- Bright tin finish and grounding indents available for EMI/RFI shielding
- UL 94V-0 rated insulators
- Machined Contacts
- Compatible with all other D Subminiatures

Technical Specifications

Termination Options	Solder Bucket, Flow Solder, Straight & 90° Wire Wrap				
Number of Contacts	9	15	25	37	50
Maximum Insertion & Extraction Force	30N	50N	83N	123N	167N
Performance Level	1, 2 or 3				
Wire Accommodation	≤ 0.5mm ² (20 AWG)				
Plug Contact Material	Copper Alloy				
Socket Contact Material	Copper Alloy				
Current Rating	5A				
Proof Voltage	2.5 Kv d.c. or a.c. peak				
Working Voltage	750V d.c. or a.c. peak				
Contact Resistance	5x10 ⁻³ Ω				
Insulation Resistance	≤5x10 ⁻⁹ Ω				
Temperature Range (°C)	-55 to +125				
Insulator Materials	GF Polyester. UL 940V-0 Rated				
Shell Materials	Steel - Zinc plated with yellow colour passivation; Bright tin				

High Performance D-Sub Connectors

Ordering Information



High Performance D-Sub Connectors

Solder Bucket - Plug

Ordering Information

Number of Contacts	Performance Level	Through Hole		Float Mount	Rear Panel Mount	
		Zinc Colour Passivation Plated Shell	Tin Indent Plated Shell	Zinc Colour Passivation Plated Shell	4-40 Rivnut Tin Indent Shell	M3 Rivnut Tin Indent Shell
9	1	DE-9P1	DE-9PTI1	DEY-9P1	DEB-9PTI1	DEP-9PTI1
9	3	DE-9P	DE-9PTI	DEY-9P	DEB-9PTI	DEP-9PTI
15	1	DA-15P1	DA-15PTI1	DAY-15P1	DAB-15PTI1	DAP-15PTI1
15	3	DA-15P	DA-15PTI	DAY-15P	DAB-15PTI	DAP-15PTI
25	1	DB-25P1	DB-25PTI1	DBY-25P1	DBB-25PTI1	DBP25PTI1
25	3	DB-25P	DB-25PTI	DBY-25P	DBB-25PTI	DBP-25PTI
37	1	DC-37P1	DC-37PTI1	DCY-37P1	DCB-37PTI1	DCP-37PTI1
37	3	DC-37P	DC-37PTI	DCY-37P	DCB-37PTI	DCP37PTI
50	1	DD-50P1	DD-50PTI1	DDY-50P1	DDB-50PTI1	DDP-50PTI1
50	3	DD-50P	DD-50PTI	DDY-50PTI	DDB-50PTI	DDP-50PTI

Solder Bucket - Socket

Ordering Information

Number of Contacts	Performance Level	Through Hole		Float Mount	Rear Panel Mount	
		Zinc Colour Passivation Plated Shell	Tin Indent Plated Shell	Zinc Colour Passivation Plated Shell	4-40 Rivnut Tin Indent Shell	M3 Rivnut Tin Indent Shell
9	1	DE-9S1	DE-9ST1	DEY-9S1	DEB-9ST1	DEP-9ST1
9	3	DE-9S	DE-9ST	DEY-9S	DEB-9ST	DEP-9ST
15	1	DA-15S1	DA-15ST1	DAY-15S1	DAB-15ST1	DAP-15ST1
15	3	DA-15S	DA-15ST	DAY-15S	DAB-15ST	DAP-15ST
25	1	DB-25S1	DB-25ST1	DBY-25S1	DBB-25ST1	DBP25ST1
25	3	DB-25S	DB-25ST	DBY-25S	DBB-25ST	DBP-25ST
37	1	DC-37S1	DC-37ST1	DCY-37S1	DCB-37ST1	DCP-37ST1
37	3	DC-37S	DC-37ST	DCY-37S	DCB-37ST	DCP37ST
50	1	DD-50S1	DD-50ST1	DDY-50S1	DDB-50ST1	DDP-50ST1
50	3	DD-50S	DD-50ST	DDY-50S	DDB-50ST	DDP-50ST

Straight PCB Mount - Plug

Ordering Information

Number of Contacts	Performance Level	Through Hole		4-40 thread Vertical BoardLock	
		Zinc Colour Passivation Plated Shell	Tin Indent Plated Shell	Tin Indent Shell	Tin Indent Shell with female screwlock
9	1	DE-9P0L21	DE-9P0L2TI1	DE-9PBL2TI1	DED-9PBL2TI1
9	3	DE-9P0L2	DE-9P0L2TI	DE-9PBL2TI	DED-9PBL2TI
15	1	DA-15P0L2TI1	DA-15P0L2TI1	DA-15PBL2TI1	DAD-15PBL2TI1
15	3	DA-15P0L2	DA-15P0L2TI	DA-15PBL2TI	DAD-15PBL2TI
25	1	DB-25P0L21	DB-25P0L2TI1	DB-25PBL2TI1	DBD-25PBL2TI1
25	3	DB-25P0L2	DB-25P0L2TI	DB-25PBL2TI	DBD-25PBL2TI
37	1	DC-37P0L21	DC-37P0L2TI1	DC-37PBL2TI1	DCD-37PBL2TI1
37	3	DC-37P0L2	DC-37P0L2TI	DC-37PBL2TI	DCD-37PBL2TI
50	1	DD-50P0L21	DD-50P0L2TI1	DD-50PBL2TI1	DDD-50PBL2TI1
50	3	DD-50P0L2	DD-50P0L2TI	DD-50PBL2TI	DDD-50PBL2TI



High Performance D-Sub Connectors

Straight PCB Mount - Socket

Ordering Information

Number of Contacts	Performance Level	Through Hole		4-40 thread Vertical BoardLock	
		Zinc Colour Passivation Plated Shell	Tin Indent Plated Shell	Tin Indent Shell	Tin Indent Shell with female screwlock
9	1	DE-9S0L21	DE-9S0L2T1	DE-9SBL2T1	DED-9SBL2T1
9	3	DE-9S0L2	DE-9S0L2T	DE-9SBL2T	DED-9SBL2T
15	1	DA-15S0L21	DA-15S0L2T1	DA-15SBL2T1	DAD-15SBL2T1
15	3	DA-15S0L2	DA-15S0L2T	DA-15SBL2T	DAD-15SBL2T
25	1	DB-25S0L21	DB-25S0L2T1	DB-25SBL2T1	DBD-25SBL2T1
25	3	DB-25S0L2	DB-25S0L2T	DB-25SBL2T	DBD-25SBL2T
37	1	DC-37S0L21	DC-37S0L2T1	DC-37SBL2T1	DCD-37SBL2T1
37	3	DC-37S0L2	DC-37S0L2T	DC-37SBL2T	DCD-37SBL2T
50	1	DD-50S0L21	DD-50S0L2T1	DD-50SBL2T1	DDD-50SBL2T1
50	3	DD-50S0L2	DD-50S0L2T	DD-50SBL2T	DDD-50SBL2T

90° PCB Mount - Plug

Ordering Information

Number of Contacts	Performance Level	Open Frame		Plastic Brackets		Keeper Mould	Snap In Boardlocks
		Zinc Colour Passivation Plated Shell	Tin Indent Plated Shell	Zinc Colour Passivation Plated Shell	Tin Indent Plated Shell	Tin Indent Plated Shell	Tin Indent Shell 4-40 Rivnut
9	1	DE-9P1A0N1	DE-9P1A0NT1	DE-9P1A1N1	DE-9P1A1NT1	DE-9P1A2NT1	DEB-9P1ASNT1
9	3	DE-9P1A0N	DE-9P1A0NT	DE-9P1A1N	DE-9P1A1NT	DE-9P1A2NT	DEB-9P1ASNT
15	1	DA-15P1A0N1	DA-15P1A0NT1	DA-15P1A1N1	DA-15P1A1NT1	DA-15P1A2NT1	DAB-15P1ASNT1
15	3	DA-15P1A0N	DA-15P1A0NT	DA-15P1A1N	DA-15P1A1NT	DA-15P1A2NT	DAB-15P1ASNT
25	1	DB-25P1A0N1	DB-25P1A0NT1	DB-25P1A1N1	DB-25P1A1NT1	DB-25P1A2NT1	DBB-26P1ASNT1
25	3	DB-25P1A0N	DB-25P1A0NT	DB-25P1A1N	DB-25P1A1NT	DB-25P1A2NT	DBB-25P1ASNT
37	1	DC-37P1A0N1	DC-37P1A0NT1	DC-37P1A1N1	DC-37P1A1NT1	DC-37P1A2NT1	DCB-37P1ASNT1
37	3	DC-37P1A0N	DC-37P1A0NT	DC-37P1A1N	DC-37P1A1NT	DC-37P1A2NT	DCB-27P1ASNT
50	1					DD-50P1A2NT1	DDB-50P1ASNT1
50	3					DD-50P1A2NT	DDB-50P1ASNT

90° PCB Mount - Socket

Ordering Information

Number of Contacts	Performance Level	Open Frame		Plastic Brackets		Keeper Mould	Snap In Boardlocks
		Zinc Colour Passivation Plated Shell	Tin Indent Plated Shell	Zinc Colour Passivation Plated Shell	Tin Indent Plated Shell	Tin Indent Plated Shell	Tin Indent Shell 4-40 Rivnut
9	1	DE-9S1A0N1	DE-9S1A0NT1	DE-9S1A1N1	DE-9S1A1NT1	DE-9S1A2NT1	DEB-9S1ASNT1
9	3	DE-9S1A0N	DE-9S1A0NT	DE-9S1A1N	DE-9S1A1NT	DE-9S1A2NT	DEB-9S1ASNT
15	1	DA-15S1A0N1	DA-15S1A0NT1	DA-15S1A1N1	DA-15S1A1NT1	DA-15S1A2NT1	DAB-15S1ASNT1
15	3	DA-15S1A0N	DA-15S1A0NT	DA-15S1A1N	DA-15S1A1NT	DA-15S1A2NT	DAB-15S1ASNT
25	1	DB-25S1A0N1	DB-25S1A0NT1	DB-25S1A1N1	DB-25S1A1NT1	DB-25S1A2NT1	DBB-26S1ASNT1
25	3	DB-25S1A0N	DB-25S1A0NT	DB-25S1A1N	DB-25S1A1NT	DB-25S1A2NT	DBB-25S1ASNT
37	1	DC-37S1A0N1	DC-37S1A0NT1	DC-37S1A1N1	DC-37S1A1NT1	DC-37S1A2NT1	DCB-37S1ASNT1
37	3	DC-37S1A0N	DC-37S1A0NT	DC-37S1A1N	DC-37S1A1NT	DC-37S1A2NT	DCB-27S1ASNT
50	1					DD-50S1A2NT1	DDB-50S1ASNT1
50	3					DD-50S1A2NT	DDB-50S1ASNT



Asia Pacific
+86 21 5442 7668
ccs.asia.sales@as.cinch.com

Europe, Middle East & Africa
+44 (0) 1245 342060
CinchConnectivity@eu.cinch.com

North America
+1 630 705 6000
inquiry@us.cinch.com

belfuse.com/cinch