



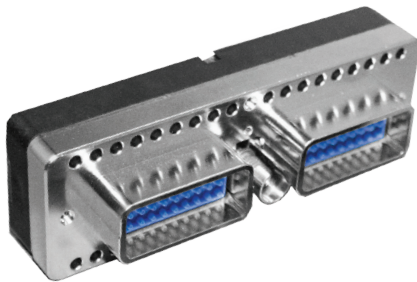
EN 4644 Electrical Solutions & Fiber

The Cinch Advantage

The **c-enx™** series offers a wide range of solutions based on two insert sizes with a large variety of shells and contacts. The series is standardized by the EN 4644 European Standard.

Available with Cinch EBOSA™ Expanded Beam Technology Expands and collimates the optical beam up to **2000 times** the original beam size making airborne dirt nearly benign to beam continuity and integrity.

Our patented **active alignment technology** aligns a standard LC ferrule to Cinch's EBOSA™ with ultra-high precision. This results in insertion loss and reflectance performance that can exceed the specification for customer specific applications for expanded beam connectors.



Features

- Slim, completely modular and expandable
- Shell design with high contact density
- Stackable shells do not require additional space for locking and unlocking connectors
- Available in aluminum, stainless steel or composite materials

Modular concept with a large variety of options

- Shell can accommodate a wide variety of inserts for signal, power, coax, data bus, fiber optic and high frequency BMA contacts
- Optional ground blocks (to meet the FAA HIRF requirements)
- Pin and socket inserts can be installed in either plug or receptacle shells (pin contacts are always fitted in the pin insert)
- Expanded Beam EBOSA™

Cost saving and user-friendly solution

- Inserts can be wired in the wire harness shop and later installed in the shells
- Common panel cut-out simplifies the connector installation
- Inserts can be easily installed and removed from the shell
- Inserts and shells are keyed to prevent mis-mating
- Standard mil-spec tools for contact crimping and contact insertion/extraction
- Field replaceable sub-assemblies
- Vibration resistant self-locking threads



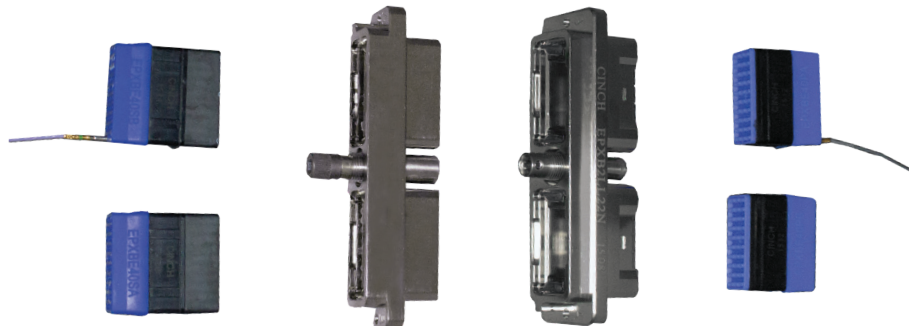
Cinch Connectivity Solutions
1700 Finley Road
Lombard, IL 60148 USA

+1 630.705.6000
inquiry@cinch.com
cinch.com

c-enx™ Disconnect

c-enx™ connectors (c-enxa, c-enxb1 and c-enxb2) are specially designed to be used in cable-cable disconnect applications and PCB-cable disconnect applications.

- Modular series allows configuration with higher performances (environmental, grounding blocks, shell mountings, etc.)
- Several accessories offer possibility to create harnesses
- Locking system is located on the connector itself



c-enx™ Rack and Panel

The c-enx™ rack and panel connectors are intended for blind mate applications. The plug connector is designed to be used in a Line Replaceable Module (LRM) while the receptacle is installed on the aircraft rack.

- Wide range of connectors (c-enxb2, c-enxb3 and c-enxb4) based on the same design utilize same accessories, polarization and mounting style
- Reliable system: the polarization device prevents any mounting mistakes between panel, plug, and receptacle shell
- Modular mounting: receptacles feature Arinc 600 functionality combined with space saving design with several mounting styles (fixed or float mount)

Environmental Characteristics

Temperature

- Temperature range: -65°C/+175°C (-85°F/+347°F) according to EIA364-32 and EN 2591-305
- Temperature range: -65°C/+125°C (-85°F/+257°F) for c-enxb2 composite shell and for Rack & Panel c-enxb
- Temperature life: 1000 hours at 175°C (valid for metallic shell only)

Other characteristics

- Salt spray: 96 hours (nickel-plated aluminum and composite) EN 2591-307 EIA 364-26 test condition A
- Humidity: 10 days with temperature variation from -10°C to +65°C EIA 364-31 Method 4, test condition B
- Altitude immersion: 3 cycles at 50,000 feet EN 2591-314 EIA 364-03

