



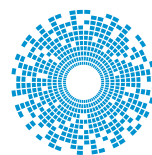
Ethernet Solutions

for MARVELL - Mass Market PHYs

Product Selection Guide



Disclaimer: Marvell owns the trademarked logo.



bel MAGNETIC
SOLUTIONS

a bel group



stewart
CONNECTOR

a bel group

The Stewart Connector and Bel Magnetic Solutions brands encompass a comprehensive portfolio of connector and magnetic options that combine Bel's connector and magnetic design expertise to provide the highest level of connectivity and signal conditioning.

Connector Options

- Plug tab down or plug tab up
- With or without LEDs (and bi-color)
- Multi-port configurations: 2x1 / 2x4 / 2x6 / 2x8
- RJ45 and USB port combinations
- Low profile versions under 0.5" height
- Micro height versions under 0.45" height
- Mid-plane mount versions under 0.40" height
- Vertical mount packaging

Magnetic Options

- 10/100 AutoMDIX
- 10/100/1000 Gigabit
- Power over Ethernet (PoE) options
- Extended temperature range of -40° C to +85° C

Bel Magnetic Solutions

Discrete LAN Magnetics product line consists of a broad range of magnetic-based solutions designed for use in high-speed computer and networking applications. Bel's portfolio of single, dual and quad SMT modules are compatible with IEEE 802.3 Ethernet standards for 10/100, 1G, 2.5G, 5G and 10GBaseT transmission. Product development will continue to focus on devices compatible with the bandwidth required to support the convergence of voice/video/ data networking, high-performance computing, and storage traffic within the enterprise space and data centers.



Stewart Connector

Stewart Connector portfolio of products include one of the broadest ranges of Ethernet connectivity available in the market today. Our interconnect product line includes passive jacks, plugs, and cable assemblies that provide connectivity in networking equipment. All of our connector products are designed to meet industry standard performance requirements and are capable of delivering data speeds through 10GBaseT Ethernet. In addition, our products are designed to exceed the requirements for all existing PoE standards including: PoE, PoE+, and 100W PoE.



10/100 SINGLE PORT PHYs

IC Series	Part Numbers				Port Config	LEDs	Port Orientation	Application	Operating Temp
	Bel Magnetic Solutions	No. of Ports	Stewart Connector	No. of Ports					
88E301X 88E3015 88E3016 88E3019	S558-5500-25-F	1	SS-7488SC5-GG-PG4-BA	1	1x1	Yes	Tab Down	10/100BaseT PoE	0 to 70°C
			SS-700810S-A-PG4-BA	1	1x1	No	Tab Down	10/100BaseT PoE	0 to 70°C
			SS-74301-001	1	1x1	Yes	Vertical	10/100BaseT PoE	0 to 70°C
			SS-7188VS-A-NF-50	1	1x1	No	Vertical	10/100BaseT PoE	0 to 70°C
			SS-748802SC5-YG-PG4-BZ	2	1x2	Yes	Tab Down	10/100BaseT PoE	0 to 70°C
			SS71800-035F	2	1x2	No	Tab Down	10/100BaseT PoE	0 to 70°C
			SS-748804SC5-YG-PG4-BZ	4	1x4	Yes	Tab Down	10/100BaseT PoE	0 to 70°C
			SS71800-041F	4	1x4	No	Tab Down	10/100BaseT PoE	0 to 70°C
			SS-74500-029	2	2x1	Yes	Stacked	10/100BaseT PoE	0 to 70°C
			SS-73100-082	2	2x1	No	Stacked	10/100BaseT PoE	0 to 70°C
			SS-74500-020	4	2x2	Yes	Stacked	10/100BaseT PoE	0 to 70°C
			SS-7388H22S-PG4-AC-50	4	2x2	No	Stacked	10/100BaseT PoE	0 to 70°C
			SS-74500-024	8	2x4	Yes	Stacked	10/100BaseT PoE	0 to 70°C
			SS-73100-073	8	2x4	No	Stacked	10/100BaseT PoE	0 to 70°C
			SS-74500-028	12	2x6	Yes	Stacked	10/100BaseT PoE	0 to 70°C
			SS73100-046F	12	2x6	No	Stacked	10/100BaseT PoE	0 to 70°C
			SS-74500-022	16	2x8	Yes	Stacked	10/100BaseT PoE	0 to 70°C
SS73100-047F	16	2x8	No	Stacked	10/100BaseT PoE	0 to 70°C			
88E3018	S558-5500-67	1	SS-7488SC5-GG-PG4-BA	1	1x1	Yes	Tab Down	10/100BaseT PoE+	-40 to 85°C
			SS-700810S-A-PG4-BA	1	1x1	No	Tab Down	10/100BaseT PoE+	-40 to 85°C
			SS-74301-001	1	1x1	Yes	Vertical	10/100BaseT PoE+	-40 to 85°C
			SS-7188VS-A-NF-50	1	1x1	No	Vertical	10/100BaseT PoE+	-40 to 85°C
			SS-748802SC5-YG-PG4-BZ	2	1x2	Yes	Tab Down	10/100BaseT PoE+	-40 to 85°C
			SS71800-035F	2	1x2	No	Tab Down	10/100BaseT PoE+	-40 to 85°C
			SS-748804SC5-YG-PG4-BZ	4	1x4	Yes	Tab Down	10/100BaseT PoE+	-40 to 85°C
			SS71800-041F	4	1x4	No	Tab Down	10/100BaseT PoE+	-40 to 85°C
			SS-74500-029	2	2x1	Yes	Stacked	10/100BaseT PoE+	-40 to 85°C
			SS-73100-082	2	2x1	No	Stacked	10/100BaseT PoE+	-40 to 85°C
			SS-74500-020	4	2x2	Yes	Stacked	10/100BaseT PoE+	-40 to 85°C
			SS-7388H22S-PG4-AC-50	4	2x2	No	Stacked	10/100BaseT PoE+	-40 to 85°C
			SS-74500-024	8	2x4	Yes	Stacked	10/100BaseT PoE+	-40 to 85°C
			SS-73100-073	8	2x4	No	Stacked	10/100BaseT PoE+	-40 to 85°C
			SS-74500-028	12	2x6	Yes	Stacked	10/100BaseT PoE+	-40 to 85°C
			SS73100-046F	12	2x6	No	Stacked	10/100BaseT PoE+	-40 to 85°C
			SS-74500-022	16	2x8	Yes	Stacked	10/100BaseT PoE+	-40 to 85°C
SS73100-047F	16	2x8	No	Stacked	10/100BaseT PoE+	-40 to 85°C			

10/100 MULTI PORT PHYs (continued)

IC Series	Part Numbers				Port Config	LEDs	Port Orientation	Application	Operating Temp
	Bel Magnetic Solutions	No. of Ports	Stewart Connector	No. of Ports					
88E3082 88E3083 88E6020 88E6220 88E6085 88E6085A 88E6046	S558-5999-46-F	1	SS-7488SC5-GG-PG4-BA	1	1x1	Yes	Tab Down	10/100BaseT	0 to 70°C
			SS-700810S-A-PG4-BA	1	1x1	No	Tab Down	10/100BaseT	0 to 70°C
			SS-74301-001	1	1x1	Yes	Vertical	10/100BaseT	0 to 70°C
			SS-7188VS-A-NF-50	1	1x1	No	Vertical	10/100BaseT	0 to 70°C
			SS-748802SC5-YG-PG4-BZ	2	1x2	Yes	Tab Down	10/100BaseT	0 to 70°C
			SS71800-035F	2	1x2	No	Tab Down	10/100BaseT	0 to 70°C
			SS-748804SC5-YG-PG4-BZ	4	1x4	Yes	Tab Down	10/100BaseT	0 to 70°C
			SS71800-041F	4	1x4	No	Tab Down	10/100BaseT	0 to 70°C
			SS-74500-029	2	2x1	Yes	Stacked	10/100BaseT	0 to 70°C
			SS-73100-082	2	2x1	No	Stacked	10/100BaseT	0 to 70°C
			SS-74500-020	4	2x2	Yes	Stacked	10/100BaseT	0 to 70°C
			SS-7388H22S-PG4-AC-50	4	2x2	No	Stacked	10/100BaseT	0 to 70°C
			SS-74500-024	8	2x4	Yes	Stacked	10/100BaseT	0 to 70°C
			SS-73100-073	8	2x4	No	Stacked	10/100BaseT	0 to 70°C
			SS-74500-028	12	2x6	Yes	Stacked	10/100BaseT	0 to 70°C
			SS73100-046F	12	2x6	No	Stacked	10/100BaseT	0 to 70°C
			SS-74500-022	16	2x8	Yes	Stacked	10/100BaseT	0 to 70°C
SS73100-047F	16	2x8	No	Stacked	10/100BaseT	0 to 70°C			
88E6240 88E6096 88E6097 88E6290	S558-5999-T5-F	1	SS-7488SC5-GG-PG4-BA	1	1x1	Yes	Tab Down	10/100BaseT	-40 to 85°C
			SS-700810S-A-PG4-BA	1	1x1	No	Tab Down	10/100BaseT	-40 to 85°C
			SS-74301-001	1	1x1	Yes	Vertical	10/100BaseT	-40 to 85°C
			SS-7188VS-A-NF-50	1	1x1	No	Vertical	10/100BaseT	-40 to 85°C
			SS-748802SC5-YG-PG4-BZ	2	1x2	Yes	Tab Down	10/100BaseT	-40 to 85°C
			SS71800-035F	2	1x2	No	Tab Down	10/100BaseT	-40 to 85°C
			SS-748804SC5-YG-PG4-BZ	4	1x4	Yes	Tab Down	10/100BaseT	-40 to 85°C
			SS71800-041F	4	1x4	No	Tab Down	10/100BaseT	-40 to 85°C
			SS-74500-029	2	2x1	Yes	Stacked	10/100BaseT	-40 to 85°C
			SS-73100-082	2	2x1	No	Stacked	10/100BaseT	-40 to 85°C
			SS-74500-020	4	2x2	Yes	Stacked	10/100BaseT	-40 to 85°C
			SS-7388H22S-PG4-AC-50	4	2x2	No	Stacked	10/100BaseT	-40 to 85°C
			SS-74500-024	8	2x4	Yes	Stacked	10/100BaseT	-40 to 85°C
			SS-73100-073	8	2x4	No	Stacked	10/100BaseT	-40 to 85°C
			SS-74500-028	12	2x6	Yes	Stacked	10/100BaseT	-40 to 85°C
			SS73100-046F	12	2x6	No	Stacked	10/100BaseT	-40 to 85°C
			SS-74500-022	16	2x8	Yes	Stacked	10/100BaseT	-40 to 85°C
SS73100-047F	16	2x8	No	Stacked	10/100BaseT	-40 to 85°C			

10/100 MULTI PORT PHYs (continued)

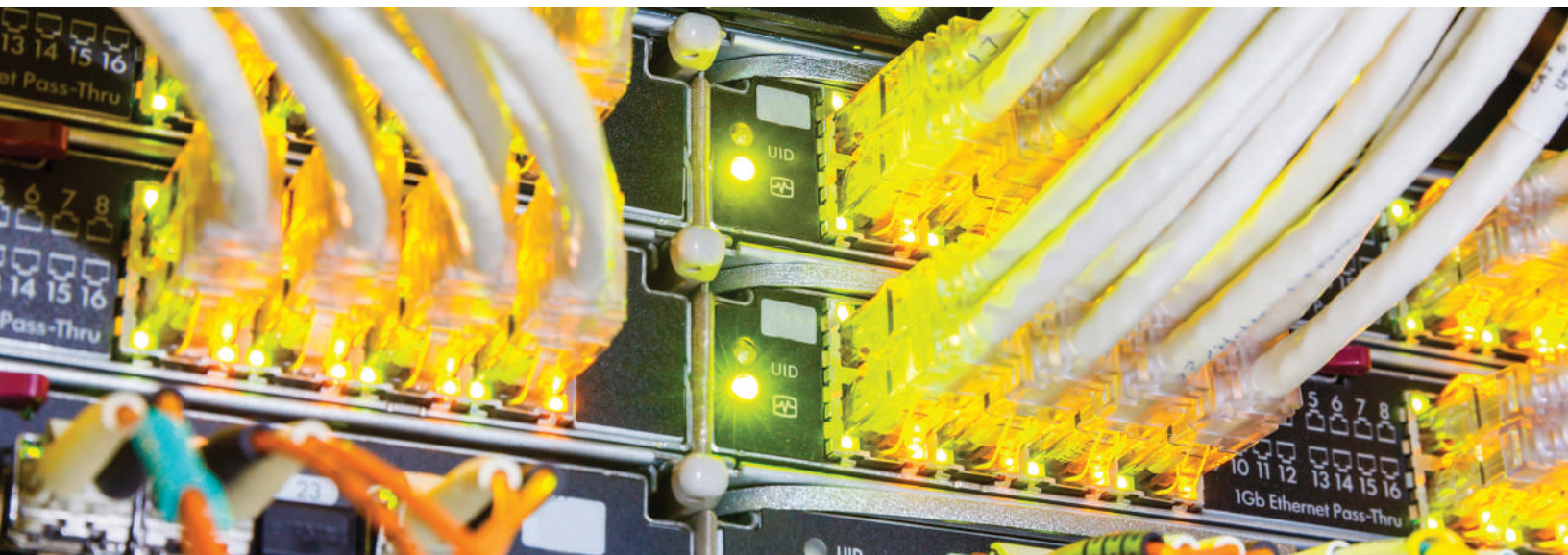
IC Series	Part Numbers				Port Config	LEDs	Port Orientation	Application	Operating Temp
	Bel Magnetic Solutions	No. of Ports	Stewart Connector	No. of Ports					
88E6070	S558-5999-U7-F	1	SS-7488SC5-GG-PG4-BA	1	1x1	Yes	Tab Down	10/100BaseT	-40 to 85°C
			SS-700810S-A-PG4-BA	1	1x1	No	Tab Down	10/100BaseT	-40 to 85°C
			SS-74301-001	1	1x1	Yes	Vertical	10/100BaseT	-40 to 85°C
			SS-7188VS-A-NF-50	1	1x1	No	Vertical	10/100BaseT	-40 to 85°C
			SS-748802SC5-YG-PG4-BZ	2	1x2	Yes	Tab Down	10/100BaseT	-40 to 85°C
			SS71800-035F	2	1x2	No	Tab Down	10/100BaseT	-40 to 85°C
			SS-748804SC5-YG-PG4-BZ	4	1x4	Yes	Tab Down	10/100BaseT	-40 to 85°C
			SS71800-041F	4	1x4	No	Tab Down	10/100BaseT	-40 to 85°C
			SS-74500-029	2	2x1	Yes	Stacked	10/100BaseT	-40 to 85°C
			SS-73100-082	2	2x1	No	Stacked	10/100BaseT	-40 to 85°C
			SS-74500-020	4	2x2	Yes	Stacked	10/100BaseT	-40 to 85°C
			SS-7388H22S-PG4-AC-50	4	2x2	No	Stacked	10/100BaseT	-40 to 85°C
			SS-74500-024	8	2x4	Yes	Stacked	10/100BaseT	-40 to 85°C
			SS-73100-073	8	2x4	No	Stacked	10/100BaseT	-40 to 85°C
			SS-74500-028	12	2x6	Yes	Stacked	10/100BaseT	-40 to 85°C
			SS73100-046F	12	2x6	No	Stacked	10/100BaseT	-40 to 85°C
			SS-74500-022	16	2x8	Yes	Stacked	10/100BaseT	-40 to 85°C
			SS73100-047F	16	2x8	No	Stacked	10/100BaseT	-40 to 85°C
88E6071	S558-5999-W2-F	1	SS-7488SC5-GG-PG4-BA	1	1x1	Yes	Tab Down	10/100BaseT	-40 to 85°C
			SS-700810S-A-PG4-BA	1	1x1	No	Tab Down	10/100BaseT	-40 to 85°C
			SS-74301-001	1	1x1	Yes	Vertical	10/100BaseT	-40 to 85°C
			SS-7188VS-A-NF-50	1	1x1	No	Vertical	10/100BaseT	-40 to 85°C
			SS-748802SC5-YG-PG4-BZ	2	1x2	Yes	Tab Down	10/100BaseT	-40 to 85°C
			SS71800-035F	2	1x2	No	Tab Down	10/100BaseT	-40 to 85°C
			SS-748804SC5-YG-PG4-BZ	4	1x4	Yes	Tab Down	10/100BaseT	-40 to 85°C
			SS71800-041F	4	1x4	No	Tab Down	10/100BaseT	-40 to 85°C
			SS-74500-029	2	2x1	Yes	Stacked	10/100BaseT	-40 to 85°C
			SS-73100-082	2	2x1	No	Stacked	10/100BaseT	-40 to 85°C
			SS-74500-020	4	2x2	Yes	Stacked	10/100BaseT	-40 to 85°C
			SS-7388H22S-PG4-AC-50	4	2x2	No	Stacked	10/100BaseT	-40 to 85°C
			SS-74500-024	8	2x4	Yes	Stacked	10/100BaseT	-40 to 85°C
			SS-73100-073	8	2x4	No	Stacked	10/100BaseT	-40 to 85°C
			SS-74500-028	12	2x6	Yes	Stacked	10/100BaseT	-40 to 85°C
			SS73100-046F	12	2x6	No	Stacked	10/100BaseT	-40 to 85°C
			SS-74500-022	16	2x8	Yes	Stacked	10/100BaseT	-40 to 85°C
			SS73100-047F	16	2x8	No	Stacked	10/100BaseT	-40 to 85°C

10/100 MULTI PORT PHYs (continued)

IC Series	Part Numbers				Port Config	LEDs	Port Orientation	Application	Operating Temp
	Bel Magnetic Solutions	No. of Ports	Stewart Connector	No. of Ports					
88E6250	S558-5999-Z5-F	1	SS-7488SC5-GG-PG4-BA	1	1x1	Yes	Tab Down	10/100BaseT	-40 to 85°C
			SS-700810S-A-PG4-BA	1	1x1	No	Tab Down	10/100BaseT	-40 to 85°C
			SS-74301-001	1	1x1	Yes	Vertical	10/100BaseT	-40 to 85°C
			SS-7188VS-A-NF-50	1	1x1	No	Vertical	10/100BaseT	-40 to 85°C
			SS-748802SC5-YG-PG4-BZ	2	1x2	Yes	Tab Down	10/100BaseT	-40 to 85°C
			SS71800-035F	2	1x2	No	Tab Down	10/100BaseT	-40 to 85°C
			SS-748804SC5-YG-PG4-BZ	4	1x4	Yes	Tab Down	10/100BaseT	-40 to 85°C
			SS71800-041F	4	1x4	No	Tab Down	10/100BaseT	-40 to 85°C
			SS-74500-029	2	2x1	Yes	Stacked	10/100BaseT	-40 to 85°C
			SS-73100-082	2	2x1	No	Stacked	10/100BaseT	-40 to 85°C
			SS-74500-020	4	2x2	Yes	Stacked	10/100BaseT	-40 to 85°C
			SS-7388H22S-PG4-AC-50	4	2x2	No	Stacked	10/100BaseT	-40 to 85°C
			SS-74500-024	8	2x4	Yes	Stacked	10/100BaseT	-40 to 85°C
			SS-73100-073	8	2x4	No	Stacked	10/100BaseT	-40 to 85°C
			SS-74500-028	12	2x6	Yes	Stacked	10/100BaseT	-40 to 85°C
			SS73100-046F	12	2x6	No	Stacked	10/100BaseT	-40 to 85°C
			SS-74500-022	16	2x8	Yes	Stacked	10/100BaseT	-40 to 85°C
			SS73100-047F	16	2x8	No	Stacked	10/100BaseT	-40 to 85°C
88E6250	S558-5999-AA-F	4	SS-7488SC5-GG-PG4-BA	1	1x1	Yes	Tab Down	10/100BaseT	-40 to 85°C
			SS-700810S-A-PG4-BA	1	1x1	No	Tab Down	10/100BaseT	-40 to 85°C
			SS-74301-001	1	1x1	Yes	Vertical	10/100BaseT	-40 to 85°C
			SS-7188VS-A-NF-50	1	1x1	No	Vertical	10/100BaseT	-40 to 85°C
			SS-748802SC5-YG-PG4-BZ	2	1x2	Yes	Tab Down	10/100BaseT	-40 to 85°C
			SS71800-035F	2	1x2	No	Tab Down	10/100BaseT	-40 to 85°C
			SS-748804SC5-YG-PG4-BZ	4	1x4	Yes	Tab Down	10/100BaseT	-40 to 85°C
			SS71800-041F	4	1x4	No	Tab Down	10/100BaseT	-40 to 85°C
			SS-74500-029	2	2x1	Yes	Stacked	10/100BaseT	0 to 70°C
			SS-73100-082	2	2x1	No	Stacked	10/100BaseT	0 to 70°C
			SS-74500-020	4	2x2	Yes	Stacked	10/100BaseT	-40 to 85°C
			SS-7388H22S-PG4-AC-50	4	2x2	No	Stacked	10/100BaseT	-40 to 85°C
			SS-74500-024	8	2x4	Yes	Stacked	10/100BaseT	-40 to 85°C
			SS-73100-073	8	2x4	No	Stacked	10/100BaseT	-40 to 85°C
			SS-74500-028	12	2x6	Yes	Stacked	10/100BaseT	-40 to 85°C
			SS73100-046F	12	2x6	No	Stacked	10/100BaseT	-40 to 85°C
			SS-74500-022	16	2x8	Yes	Stacked	10/100BaseT	-40 to 85°C
			SS73100-047F	16	2x8	No	Stacked	10/100BaseT	-40 to 85°C

10/100/1000 SINGLE PORT PHYs (continued)

IC Series	Part Numbers			Port Config	LEDs	Port Orientation	Application	Operating Temp				
	Bel Magnetic Solutions	No. of Ports	Stewart Connector									
88E1114 88E1115 88E1116 88E1116R 88E1118 88E1118R 88E1310 88E1310S 88E1318 88E1318S 88E1111 88E1112 88E1119R 88E1510 88E1514	S558-5999-AB-F	1	SS-7488SC5-GG-PG4-BA	1	1x1	Yes	Tab Down	1000BaseT	-40 to 85°C			
			SS-700810S-A-PG4-BA	1	1x1	No	Tab Down	1000BaseT	-40 to 85°C			
			SS-74301-001	1	1x1	Yes	Vertical	1000BaseT	-40 to 85°C			
			SS-7188VS-A-NF-50	1	1x1	No	Vertical	1000BaseT	-40 to 85°C			
			88E1512	S558-5999-AC-F	1	SS-7488SC5-GG-PG4-BA	1	1x1	Yes	Tab Down	1000BaseT	-40 to 85°C
						SS-7188S-A-PG4-BA-50	1	1x1	No	Tab Down	1000BaseT	-40 to 85°C
						SS-74301-001	1	1x1	Yes	Vertical	1000BaseT	-40 to 85°C
						SS-7188VS-A-NF-50	1	1x1	No	Vertical	1000BaseT	-40 to 85°C
			88E1011	S558-5999-AR-F	1	SS-7488SC5-GG-PG4-BA	1	1x1	Yes	Tab Down	1000BaseT	-40 to 85°C
						SS-7188S-A-PG4-BA-50	1	1x1	No	Tab Down	1000BaseT	-40 to 85°C
						SS-74301-001	1	1x1	Yes	Vertical	1000BaseT	-40 to 85°C
SS-7188VS-A-NF-50	1	1x1				No	Vertical	1000BaseT	-40 to 85°C			
88E1518	S558-5500-68	1	SS-7488SC5-GG-PG4-BA	1	1x1	Yes	Tab Down	1000BaseT PoE+	-40 to 85°C			
			SS-7188S-A-PG4-BA-50	1	1x1	No	Tab Down	1000BaseT PoE+	-40 to 85°C			
			SS-74301-001	1	1x1	Yes	Vertical	1000BaseT PoE+	-40 to 85°C			
			SS-7188VS-A-NF-50	1	1x1	No	Vertical	1000BaseT PoE+	-40 to 85°C			
88E1518	S558-5500-76	1	SS-7488SC5-GG-PG4-BA	1	1x1	Yes	Tab Down	1000BaseT PoE+	-40 to 85°C			
			SS-7188S-A-PG4-BA-50	1	1x1	No	Tab Down	1000BaseT PoE+	-40 to 85°C			
			SS-74301-001	1	1x1	Yes	Vertical	1000BaseT PoE+	-40 to 85°C			
			SS-7188VS-A-NF-50	1	1x1	No	Vertical	1000BaseT PoE+	-40 to 85°C			



10/100/1000 MULTI PORT PHYs

IC Series	Part Numbers			Port Config	LEDs	Port Orientation	Application	Operating Temp	
	Bel Magnetic Solutions	No. of Ports	Stewart Connector						
88E1121 88E1121R 88E1548 88E1545 88E1543 88E1340 88E1340S 88E1322 88E1240 88E1149 88E1149R 88E1141 88E1145 88E1680 88E1680H	S558-5999-BQ-F	2	SS-7488SC5-GG-PG4-BA	1	1x1	Yes	Tab Down	1000BaseT	-40 to 85°C
			SS-7188S-A-PG4-BA-50	1	1x1	No	Tab Down	1000BaseT	-40 to 85°C
			SS-74301-001	1	1x1	Yes	Vertical	1000BaseT	-40 to 85°C
			SS-7188VS-A-NF-50	1	1x1	No	Vertical	1000BaseT	-40 to 85°C
			SS-748802SC5-YG-PG4-BZ	2	1x2	Yes	Tab Down	1000BaseT	-40 to 85°C
			SS71800-035F	2	1x2	No	Tab Down	1000BaseT	-40 to 85°C
			SS-748804SC5-YG-PG4-BZ	4	1x4	Yes	Tab Down	1000BaseT	-40 to 85°C
			SS71800-041F	4	1x4	No	Tab Down	1000BaseT	-40 to 85°C
			SS-74500-029	2	2x1	Yes	Stacked	1000BaseT	-40 to 85°C
			SS-73100-082	2	2x1	No	Stacked	1000BaseT	-40 to 85°C
			SS-74500-020	4	2x2	Yes	Stacked	1000BaseT	-40 to 85°C
			SS-7388H22S-PG4-AC-50	4	2x2	No	Stacked	1000BaseT	-40 to 85°C
			SS-74500-024	8	2x4	Yes	Stacked	1000BaseT	-40 to 85°C
			SS-73100-073	8	2x4	No	Stacked	1000BaseT	-40 to 85°C
			SS-74500-028	12	2x6	Yes	Stacked	1000BaseT	-40 to 85°C
			SS73100-046F	12	2x6	No	Stacked	1000BaseT	-40 to 85°C
			88E1121 88E1121R 88E1548 88E1545 88E1543 88E1340 88E1340S 88E1322 88E1240 88E1149 88E1149R 88E1141 88E1145 88E1680 88E1680H	S558-5999-CJ	2	SS-7488SC5-GG-PG4-BA	1	1x1	Yes
SS-7188S-A-PG4-BA-50	1	1x1				No	Tab Down	1000BaseT	0 to 70°C
SS-74301-001	1	1x1				Yes	Vertical	1000BaseT	0 to 70°C
SS-7188VS-A-NF-50	1	1x1				No	Vertical	1000BaseT	0 to 70°C
SS-748802SC5-YG-PG4-BZ	2	1x2				Yes	Tab Down	1000BaseT	0 to 70°C
SS71800-035F	2	1x2				No	Tab Down	1000BaseT	0 to 70°C
SS-748804SC5-YG-PG4-BZ	4	1x4				Yes	Tab Down	1000BaseT	0 to 70°C
SS71800-041F	4	1x4				No	Tab Down	1000BaseT	0 to 70°C
SS-74500-029	2	2x1				Yes	Stacked	1000BaseT	0 to 70°C
SS-73100-082	2	2x1				No	Stacked	1000BaseT	0 to 70°C
SS-74500-020	4	2x2				Yes	Stacked	1000BaseT	0 to 70°C
SS-7388H22S-PG4-AC-50	4	2x2				No	Stacked	1000BaseT	0 to 70°C
SS-74500-024	8	2x4				Yes	Stacked	1000BaseT	0 to 70°C
SS-73100-073	8	2x4				No	Stacked	1000BaseT	0 to 70°C
SS-74500-028	12	2x6				Yes	Stacked	1000BaseT	0 to 70°C
SS73100-046F	12	2x6				No	Stacked	1000BaseT	0 to 70°C

10/100/1000 MULTI PORT PHYs (continued)

IC Series	Part Numbers				Port Config	LEDs	Port Orientation	Application	Operating Temp
	Bel Magnetic Solutions	No. of Ports	Stewart Connector	No. of Ports					
88E6151 88E1685	S558-5999-DC	2	SS-7488SC5-GG-PG4-BA	1	1x1	Yes	Tab Down	1000BaseT	-40 to 85°C
			SS-7188S-A-PG4-BA-50	1	1x1	No	Tab Down	1000BaseT	-40 to 85°C
			SS-74301-001	1	1x1	Yes	Vertical	1000BaseT	-40 to 85°C
			SS-7188VS-A-NF-50	1	1x1	No	Vertical	1000BaseT	-40 to 85°C
			SS-748802SC5-YG-PG4-BZ	2	1x2	Yes	Tab Down	1000BaseT	-40 to 85°C
			SS71800-035F	2	1x2	No	Tab Down	1000BaseT	-40 to 85°C
			SS-748804SC5-YG-PG4-BZ	4	1x4	Yes	Tab Down	1000BaseT	-40 to 85°C
			SS71800-041F	4	1x4	No	Tab Down	1000BaseT	-40 to 85°C
			SS-74500-029	2	2x1	Yes	Stacked	1000BaseT	-40 to 85°C
			SS-73100-082	2	2x1	No	Stacked	1000BaseT	-40 to 85°C
			SS-74500-020	4	2x2	Yes	Stacked	1000BaseT	-40 to 85°C
			SS-7388H22S-PG4-AC-50	4	2x2	No	Stacked	1000BaseT	-40 to 85°C
			SS-74500-024	8	2x4	Yes	Stacked	1000BaseT	-40 to 85°C
			SS-73100-073	8	2x4	No	Stacked	1000BaseT	-40 to 85°C
			SS-74500-028	12	2x6	Yes	Stacked	1000BaseT	-40 to 85°C
			SS73100-046F	12	2x6	No	Stacked	1000BaseT	-40 to 85°C

2.5G PHYs

IC Series	Part Numbers				Port Config	LEDs	Port Orientation	Application	Operating Temp
	Bel Magnetic Solutions	No. of Ports	Stewart Connector	No. of Ports					
88X2X10 88E2180 88E2110	S558-5500-JD	1	SS-7488SC5-GG-PG4-BA	1	1x1	Yes	Tab Down	2.5G BaseT PoE+	-40 to 85°C
			SS-7188S-A-PG4-BA-50	1	1x1	No	Tab Down	2.5G BaseT PoE+	-40 to 85°C
			SS-74301-001	1	1x1	Yes	Vertical	2.5G BaseT PoE+	-40 to 85°C
			SS-7188VS-A-NF-50	1	1x1	No	Vertical	2.5G BaseT PoE+	-40 to 85°C
			SS-748802SC5-YG-PG4-BZ	2	1x2	Yes	Tab Down	2.5G BaseT PoE+	-40 to 85°C
			SS71800-035F	2	1x2	No	Tab Down	2.5G BaseT PoE+	-40 to 85°C
			SS-748804SC5-YG-PG4-BZ	4	1x4	Yes	Tab Down	2.5G BaseT PoE+	-40 to 85°C
			SS71800-041F	4	1x4	No	Tab Down	2.5G BaseT PoE+	-40 to 85°C
			SS-73100-082	2	2x1	No	Stacked	2.5G BaseT PoE+	-40 to 85°C
			SS-73100-073	8	2x4	No	Stacked	2.5G BaseT PoE+	-40 to 85°C
			SS73100-046F	12	2x6	No	Stacked	2.5G BaseT PoE+	-40 to 85°C

5G PHYs

IC Series	Part Numbers			Port Config	LEDs	Port Orientation	Application	Operating Temp	
	Bel Magnetic Solutions	No. of Ports	Stewart Connector						No. of Ports
88X2X10 88E2180 88E2110	S558-5500-JV	1	SS-60300-011	1	1x1	No	Tab Up	5G BaseT PoE+	-40 to 85°C
			SS-60300-046	1	1x1	No	Vertical	5G BaseT PoE+	-40 to 85°C

10G PHYs

IC Series	Part Numbers			Port Config	LEDs	Port Orientation	Application	Operating Temp	
	Bel Magnetic Solutions	No. of Ports	Stewart Connector						No. of Ports
88X31X0	S558-10GB-15	1	SS-60300-011	1	1x1	No	Tab Up	10G BaseT PoE+	0 to 70°C
			SS-60300-046	1	1x1	No	Vertical	10G BaseT PoE+	0 to 70°C
88X32X0	S558-10GB-22	1	SS-60300-011	1	1x1	No	Tab Up	10G BaseT PoE+	-40 to 85°C
			SS-60300-046	1	1x1	No	Vertical	10G BaseT PoE+	-40 to 85°C





About Bel

Founded in 1949, Bel designs, manufactures and markets a broad array of products that power, protect and connect electronic circuits.

With over 65 years in the electronics industry, Bel has reliably demonstrated the ability to succeed in a variety of product areas across multiple industries. The company has a strong track record of technical innovation working with the engineering teams of market leaders.

Bel has consistently proven to be a valuable supplier to the foremost companies in its chosen industries by developing cost effective solutions for the challenges of new product development. By combining our strength in product design with our own specially designed manufacturing facilities, Bel has established itself as a formidable competitor on a global basis.



Bel Magnetic Solutions
12700 Stowe Drive, Suite 200
Poway, CA 92064 USA
+1 858.676.9650
techhelp@belf.com
belfuse.com/magnetic-solutions

Stewart Connector
11118 Susquehanna Trail South
Glen Rock, PA 17327-9199
+1 717.235.7512
techhelp@belf.com
belfuse.com/stewart-connector