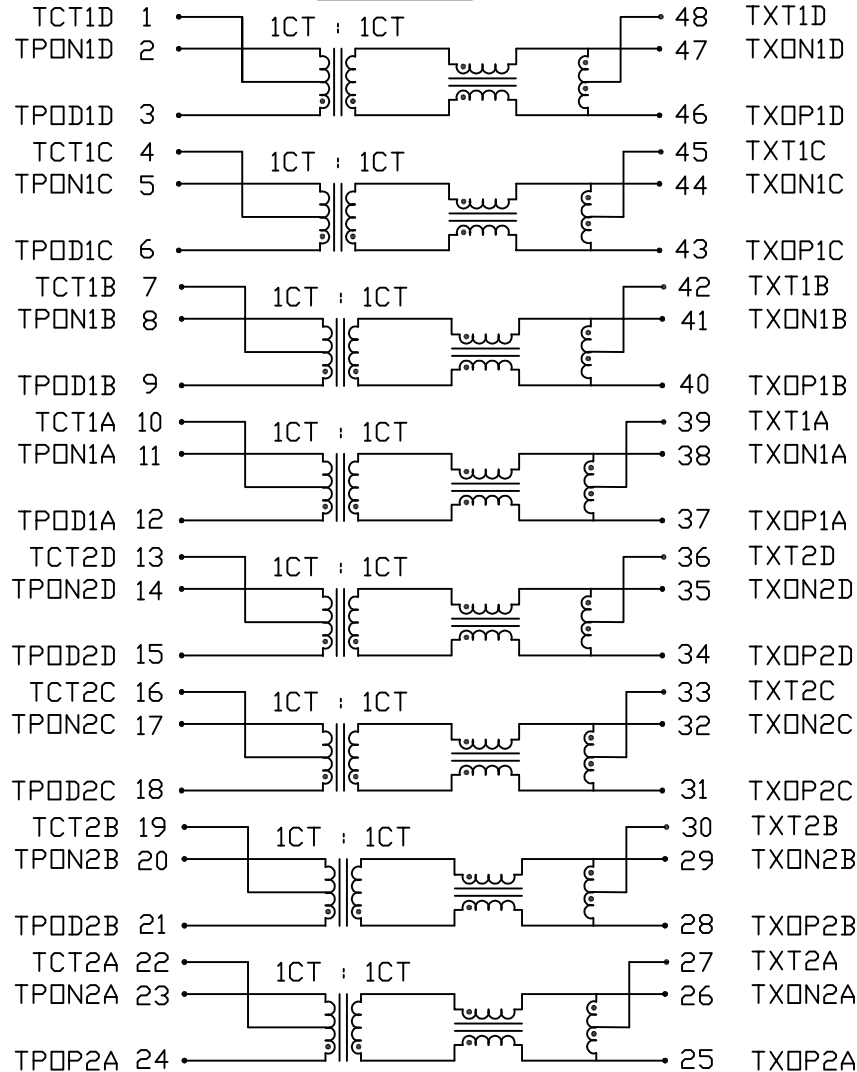


THE INFORMATION CONTAINED HEREIN IS CONSIDERED "PROPRIETARY" TO BEL FUSE INC. AND SHALL NOT BE COPIED, REPRODUCED OR DISCLOSED WITHOUT THE WRITTEN APPROVAL OF BEL FUSE INC.

ELECTRICAL CHARACTERISTICS @ 25°C



SCHEMATIC



URNS RATIO

Tx SIDE: 1CT : 1CT

QCL

350μH MIN.
@100kHz, 100mV, WITH 8mA DC BIAS.

PIN (46-47), (43-44), (40-41), (37-38)

PIN (34-35), (31-32), (28-29), (25-26)

INSERTION LOSS

FREQ.	1MHz	65MHz	100MHz	125MHz
MAX.	1.1dB	0.5dB	0.9dB	1.5dB

RETURN LOSS

MEASURED UNDER A
100 Ω ENVIRONMENT

18dB MIN. @ 0.5 TO 40 MHz
12-20LOG(f/80MHz)dB MIN. @ 40 TO 100MHz.

COMMON TO COMMON
MODE REJECTION

30dB MIN. @ 0.1 TO 100MHz.

CROSSTALK

33-20LOG(f/100MHz)dB MIN. @ 1 TO 100MHz.

HIPOT

LEAKAGE CURRENT LESS THAN 1mA AT 1500VAC

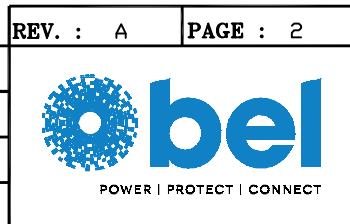
NOTES :

THIS PRODUCT HAS BEEN SUPPLYING TO
JAPAN CUSTOMERS. PCN PROCESS NEEDS
TO COMPLY WITH 4M CRITERIA.

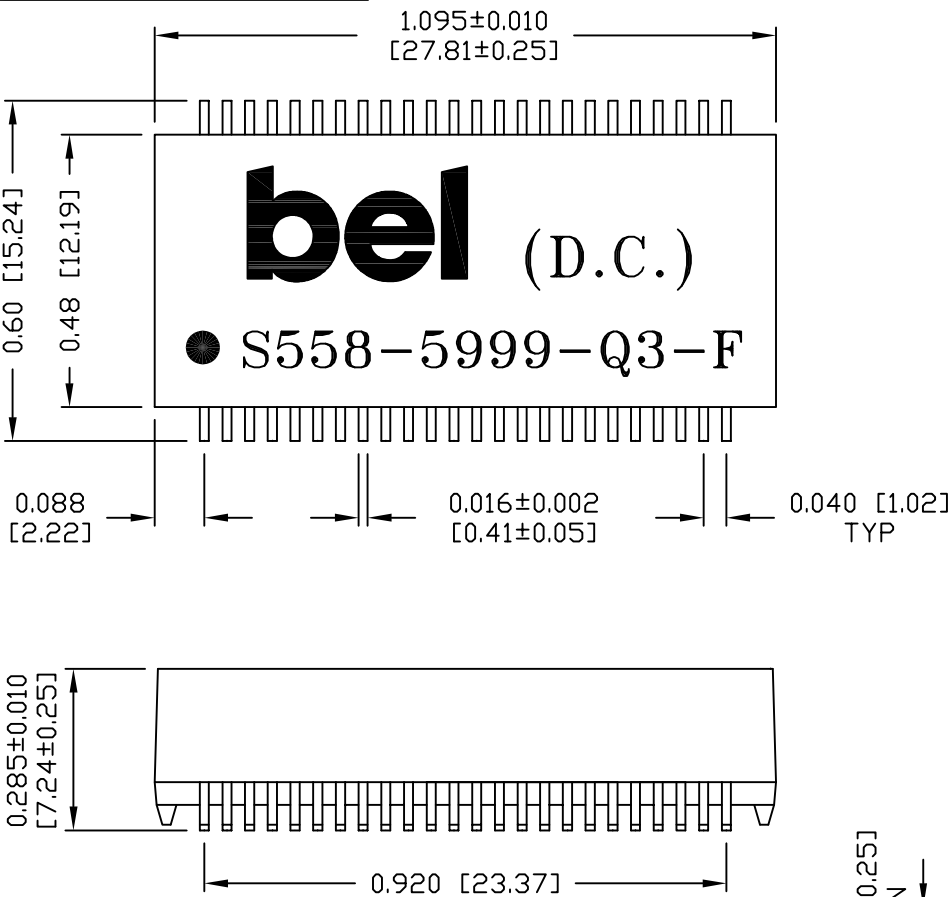
ORIGINATED BY	DATE	TITLE
Alice Pang	2021-01-27	DUAL 1000BASE-T
DRAWN BY	DATE	
ZC Guo	2021-01-27	S558-5999-Q3-F

PART NO. / DRAWING NO.	STANDARD DIM.	[] METRIC DIM. AS REF.
S558-5999-Q3-F	TOL. IN INCH	UNIT : INCH [mm]
FILE NAME	.X	SCALE : N/A
S5585999Q3FA.DWG	.XX	SIZE : A4
	.XXX	

REV. : A	PAGE : 2
----------	----------

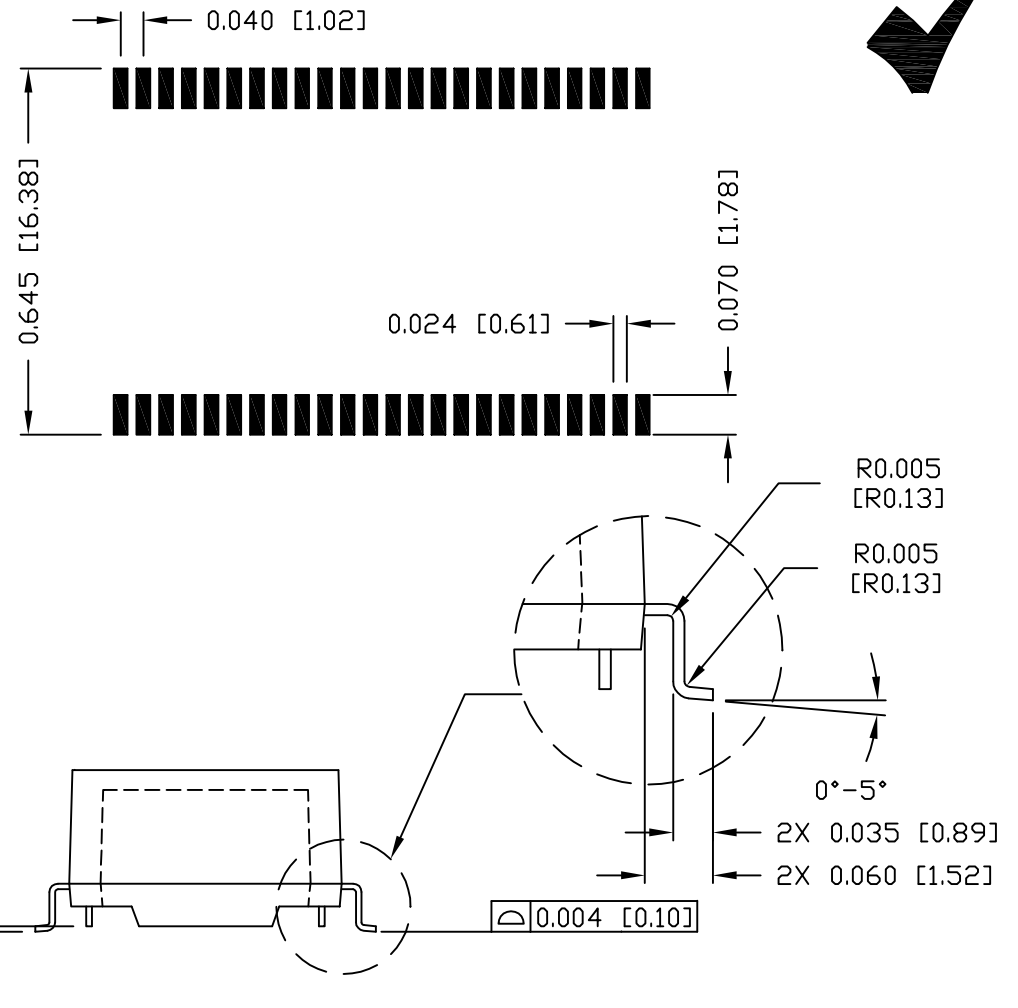


THE INFORMATION CONTAINED HEREIN IS CONSIDERED "PROPRIETARY" TO BEL FUSE INC. AND SHALL NOT BE COPIED, REPRODUCED OR DISCLOSED WITHOUT THE WRITTEN APPROVAL OF BEL FUSE INC.



SUGGESTED PCB PAD LAYOUT

RoHS



NOTES :

1. STANDARD MARKING REFER TO DOC. HAND-WORK-04.
2. PACKAGE CODE: "QVS001".
3. THIS PRODUCT HAS BEEN SUPPLYING TO JAPAN CUSTOMERS. PCN PROCESS NEEDS TO COMPLY WITH 4M CRITERIA.

ORIGINATED BY		DATE	TITLE	PART NO. / DRAWING NO.		STANDARD DIM. [] METRIC DIM. AS REF.		REV. : A	PAGE : 3	
Lawrence Tsang		2021-01-27	MECHANICAL DRAWING S558-5999-Q3-F	S558-5999-Q3-F		TOL. IN INCH		UNIT : INCH [mm]		
DRAWN BY		DATE		FILE NAME	.X		SCALE : N/A		 POWER PROTECT CONNECT	
ZC Guo		2021-01-27		S5585999Q3FA.DWG	.XX ±0.01		SIZE : A4			
				.XXX ±0.005						